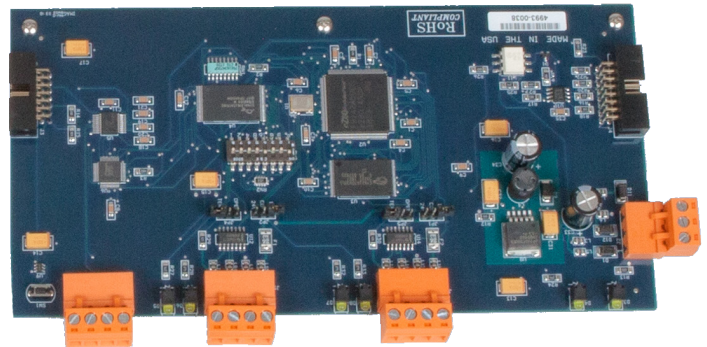




GCS DUAL SERIES INTERFACE

635 DSI

Dual Serial Interface (DSI) Interface Board: The DSI board is designed as a 3rd party integration solution for devices using RS-485 protocol. There are two RS-485 ports per board that support RS-485 devices in a single or multi-drop configuration. Each RS-485 Section of the DSI Board shall provide a configurable +12/+24 VDC output power. The DSI Board optional on-board termination (120Ω) for each RS-485 Section. The board supports wireless reader technology, relay controls and Galaxy RS-485 Remote DPI modules.

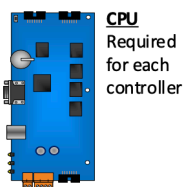


USES OF RS485:

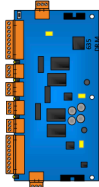
- Remote DRM locating (above the door)
- Wireless Locks (Allegion, Assa Abloy, Salto)
- System Connection to Alarm Monitoring Module (AMM)
- System Connection to Elevator Relay Module (ERM)
- System Connection to Output Relay Module (ORM)
- FIPS201/CAC Dynamically change authorizing form factor

Galaxy 635 Hardware Line has the following certifications: **FICAM** **DIACAP/RMF** **CE** **UL LISTED**

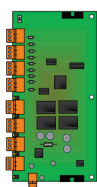
Galaxy is a simple, single platform that allows boards to intermingle within one cabinet. All 635-series interface boards are "hot-swappable" and intelligent. You can change or add boards while the panel is powered up and operating. And the intelligent design means the boards will synchronize to the system and begin operating within minutes. This provides uninterrupted security during maintenance and upgrades.



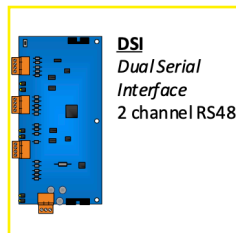
CPU
Required for each controller



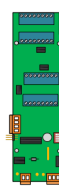
DRM
Dual Reader Module
Readers & door devices



DIO
Digital Input/Output 8 In / 4 Out



DSI
Dual Serial Interface
2 channel RS485



AMM
Alarm Monitoring Module
16 Inputs
Uses RS485 via DSI



ORM
Output Relay Module
8 Outputs
Uses RS485 via DSI



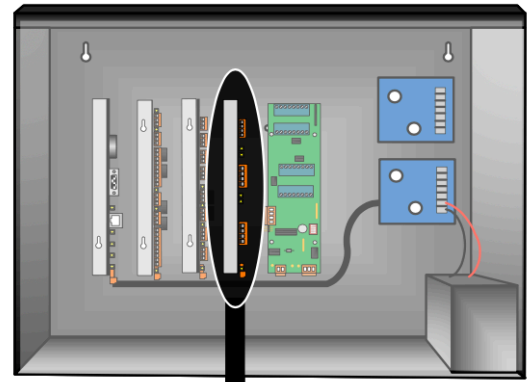
SYSTEM CONNECTIONS:

- I2C BUS-CPU Communication.
- 12 or 24vDC Power
- Factory Test Station (FTS)

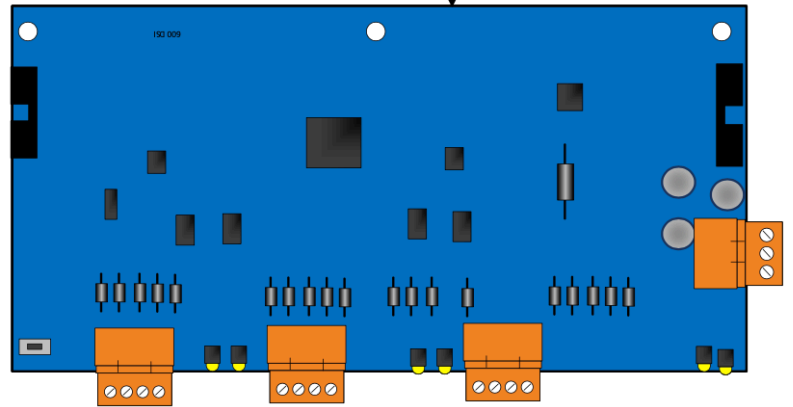
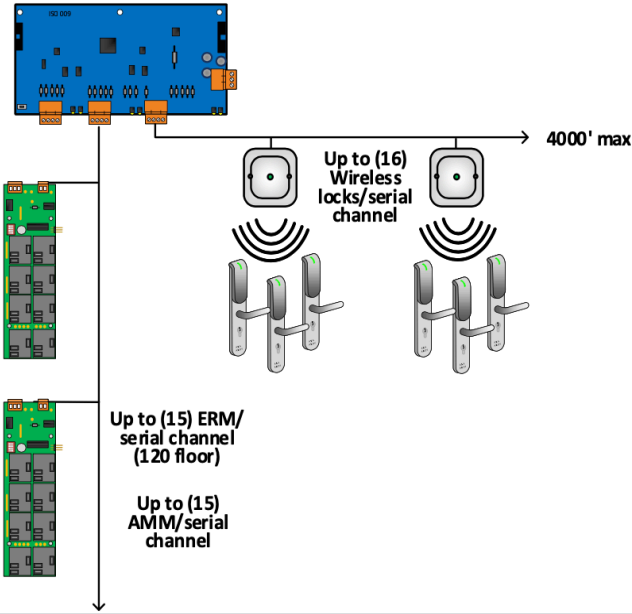
DEVICE CONNECTIONS:

- RS485 Comm port x2

In-Controller Mounting



20-0655-10 (635)
20-0650-10 (600)



All Controllers Include:

- Door Lock
- Tamper
- Power Supply w/ Harness
- 12v 4ah/7ah Battery*
- 12C Bus (ribbon cable)
- Factory Config. Cable

Board Capacity (slots)

Excl. 1 for Required CPU

Reader Capacity

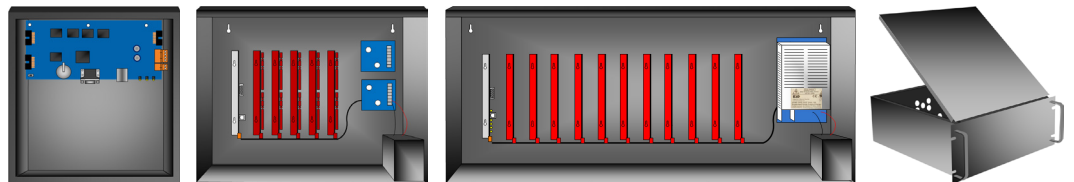
Dimensions (HxWxD)

in:
cm:

Input Power

Weight lbs
kg

GCS Hardware 635 Series Control Panels



	1	5	11	5
Board Capacity (slots)	1	5	11	5
Reader Capacity	2	2-8	2-16	2-8
Dimensions (HxWxD)	12x12x4 30x30x10	18x13.75x6.25 46x35x16	32x13.75x6.25 81x35x16	7x19x18.75 4U 18x49x48
Input Power	3amp** (PoE 15/30w)	3amp/6amp**	6amp	3amp/6amp**
Weight lbs kg	2	2-8	2-16	26lbs (11.79)

18ga. Epoxy finish, hinged, knockouts

* Denotes 4ah 2-Door Panel Only

** Denotes Life Safety Power Supply Option