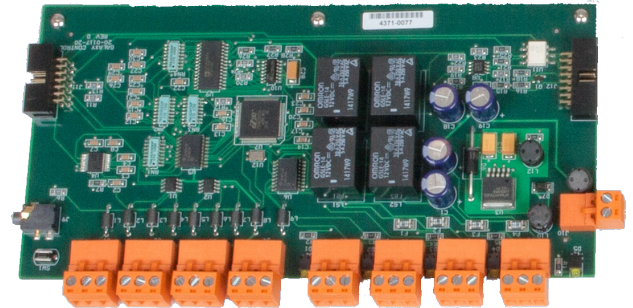




GCS DIGITAL INPUT/OUTPUT

635 DIO

Digital Input/Output Board (DIO): The DIO board controls inputs & outputs with user-defined schedules and an extensive array of configurable options. The DIO board reports the appropriate input status and alarm event (trouble or safe) based on configuration. Supervision of inputs is supported by the DIO board. And as an added layer of protection, the DIO also offers an on-board feature, known as Hypervision, which protects the supervision from being defeated. These inputs shall provide four-state supervision with user-selectable resistor values for Normally Open, Normally Closed, Trouble Open, and Trouble Short.



REQUIRES: Controller w/ 635CPU

FEATURES:

- (8) Supervised Inputs
- (4) Form C Output Relays, 1.5amps @24vdc
- LED Indicators for Each Relay
- Monitor Normally Open or Closed Contact Devices
- Inputs/Outputs are Software Programmable
- Hot Swappable

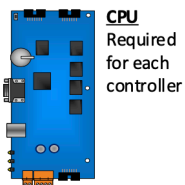
Galaxy 635 Hardware Line has the following certifications:

FICAM

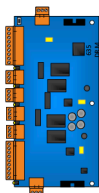
DIACAP/RMF



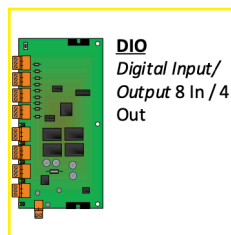
Galaxy is a simple, single platform that allows boards to intermingle within one cabinet. All 635-series interface boards are "hot-swappable" and intelligent. You can change or add boards while the panel is powered up and operating. And the intelligent design means the boards will synchronize to the system and begin operating within minutes. This provides uninterrupted security during maintenance and upgrades.



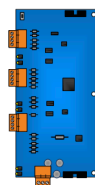
CPU
Required for each controller



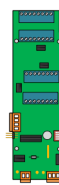
DRM
Dual Reader Module Readers & door devices



DIO
Digital Input/Output 8 In / 4 Out



DSI
Dual Serial Interface 2 channel RS485



AMM
Alarm Monitoring Module 16 Inputs Uses RS485 via DSI



ORM
Output Relay Module 8 Outputs Uses RS485 via DSI



SYSTEM CONNECTIONS:

- I2C BUS-CPU Communication.
- 12vDC Power
- Factory Test Station (FTS)

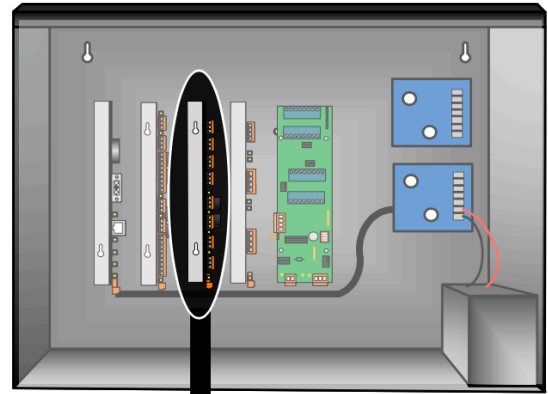
DEVICE CONNECTIONS:

- (8) Fully Supervised Inputs
- (4) Form C Relays 1.5a @24vDC

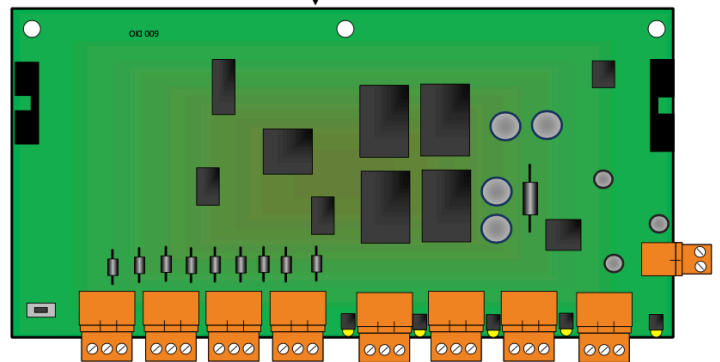
SUGGESTED USES:

- Output Notifications
- Device Monitoring
 - Door Position Switches
 - Break-glass Detectors
 - Area Monitor Detectors
 - Any Normally Open or Closed Contact Devices

In-Controller Mounting



20-0117-20



All Controllers Include:

- Door Lock
- Tamper
- Power Supply w/ Harness
- 12v 4ah/7ah Battery*
- 12C Bus (ribbon cable)
- Factory Config. Cable

Board Capacity (slots)

Excl. 1 for Required CPU

Reader Capacity

Dimensions (HxWxD)

in:
cm:

Input Power

Weight lbs
kg

GCS Hardware 635 Series Control Panels



	1	5	11	5
	2	2-8	2-16	2-8
	12x12x4 30x30x10	18x13.75x6.25 46x35x16	32x13.75x6.25 81x35x16	7x19x18.75 4U 18x49x48
	3amp** (PoE 15/30w)	3amp/6amp**	6amp	3amp/6amp**
	2	2-8	2-16	26lbs (11.79)

18ga. Epoxy finish, hinged, knockouts

* Denotes 4ah 2-Door Panel Only

** Denotes Life Safety Power Supply Option