

# System Galaxy Addendum

## MilestoneXP 64bit Video Plugin Solution

PUBLISHED SEP 2024



### System Galaxy

**Install & Configure Plugin**

**Import & Assign Cameras**

**Operate Video Viewer**  
(Live / Recorded)

Information in this document is subject to change without notice.  
Therefore, no claims are made as to the accuracy or completeness of this document.

Galaxy Control Systems makes no claims on the requirements or limitations of software or devices of 3rd Party Manufacturers. Every effort is made to include all known requirements and capabilities as they relate to System Galaxy. Information herein may not supersede requirements of 3rd party manufacturers

No part of this document may be reproduced, copied, adapted, or transmitted, in any form or by any means, electronic or mechanical, for any purpose, without the express written consent of Galaxy Control Systems. Copyright protection claims include all forms and matters of copyrighted material and information, including but not limited to, material generated from the software programs, which are displayed on the screen such as icons, look and feel, etc.

**5th Edition / SEPT 2024      Copyright © 2022 ♦ Galaxy Control Systems ♦ All rights reserved**

Release with ver. 11.X

**Trademarks**  
As applicable, the following names, logos, and trademarks are intellectual and registered property of their respective owners in the United States of America and other jurisdictions worldwide.

Screenshots used in this guide are for instructional reference only. Concept and Topology diagrams are original design of illustrator unless otherwise indicated.

**Scope**  
This guide covers known requirements and instructions to configure System Galaxy to integrate with 3rd Party

---

Video Plug-ins.

### Manufacturer's Specific Requirements and Compatibility

Always consult the manufacturer's documentation for requirements and capabilities related to the product ( i.e. OS, install/set up, speed, bandwidths, supported camera models and features, codecs, etc. ). The availability of features, cameras, video controls etc. are controlled by the 3<sup>rd</sup> Party Plug-ins and may change without notice. Contact authorized Tech Support if questions arise.

### History

SG 11.7.0 (3rd Edition) – Merge all VPIs into one guide.

SG 11.8.3 (5th Edition) – Pub all guides seperately by brand from Flare.

## **Galaxy Control Systems**

3 North Main Street  
Walkersville MD 21793

**[www.galaxysys.com](http://www.galaxysys.com)**

# Table Of Contents

<b>Table Of Contents</b>	<b>3</b>
<b>Introduction to Milestone XP Video Plugin</b>	<b>5</b>
<b>FEATURED Topics</b>	<b>5</b>
<b>System Overview</b>	<b>5</b>
System Settings	5
DVR Enabled	6
Auto Pop On Alarm	6
Installing Plugins	6
Linking Cameras	6
Viewing Video	6
<b>Part 1: Requirements &amp; Setup</b>	<b>7</b>
FEATURED TOPICS	7
Video Plugin Requirements	7
SG Setup Checklist (required)	8
<b>Install Milestone XProtect Plugin</b>	<b>10</b>
FEATURED TOPICS	10
Milestone XProtect Video Plugin (Server)	10
PREREQUISITES	10
STEPS	11
Install Middleware Connector Service	11
PREREQUISITES	11
STEPS	12
Install Video Plugin (Client)	13
PREREQUISITES	13
STEPS	13
Connect to VMS & Import Cameras	14
PREREQUISITES	14
STEPS	15
	16
Test the VMS & Cameras	16
PREREQUISITE	16
STEPS	16
<b>Part 3: Linking Cameras</b>	<b>19</b>

Features in this Topic .....	19
	19
Link Camera to a Reader .....	20
PREREQUISITES .....	20
Linking a Camera to an Input .....	22
PREREQUISITES .....	22
Part 4: View Video .....	24
Features in this Topic .....	24
Playback Controls .....	24
Operate Viewer in Live Mode .....	25
Operate Viewer in Recorded Mode .....	26

# Introduction to Milestone XP Video Plugin

These instructions apply to the Milestone XP Video Plugin that integrates with System Galaxy.

## FEATURED TOPICS

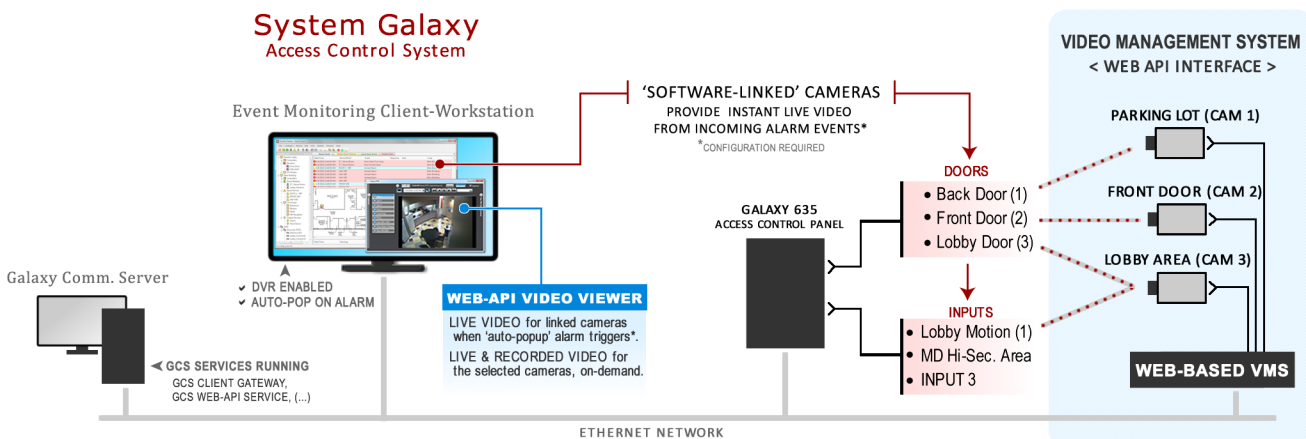
Perform these topics in sequential order - i.e., *setup*, *install*, and *configure* for your brand video system.

- [Setup & Requirements Checklist](#)
- [Install Video Plugin](#)
- [Configure Cameras](#)
- [View Video](#)

**!** You must meet [Requirements](#) and [Setup Checklist](#) before installing Video Plugin files.

## System Overview

The diagram below depicts the System Galaxy integration with a *Video Management System* using the Web API Interface and Video Plugins which are installed on the System Galaxy workstation.



## System Settings

After the DVR Support is enabled in the *System Registration*, certain options must be configured in the *System Settings* to allow video viewing at each workstation - or control how system alarms affect video playback. See [Requirements & Setup](#) for details.

## DVR Enabled

The **DVR Enabled** option controls whether the *Galaxy Video Viewer* can be opened and play video. This is a workstation-specific option, so you can disable this at clients where you don't need video monitoring.

## Auto Pop On Alarm

The **Auto-Pop or Callup Video on Alarm** controls whether the *Video Viewer* will automatically open and play live video when an **alarm** is detected from a door or input that is linked to a camera.

Note: the **Alarm Priority** and **time of alarm** can affect which camera feed is displaying when multiple alarms are triggered. Generally the newest alarm takes precedence unless an alarm priority overrides it. Test your incoming video vigorously to be sure you understand how your alarm options affect video.

---

## Installing Plugins

You should complete all the system programming and camera programming including camera names at the Video Management Unit before you install the Video Plugins. This includes configuring the SG Login account at the VMS and give it permissions to all cameras. Once this is done you can proceed to the Installing Video Plugin topic for your brand of VMS. The *GCS Web API Service* must be running /online before you install the Plugin file.

---

## Linking Cameras

Cameras are linked to doors, elevators, or inputs (such as motion detectors) from within the System Galaxy software programming screens.

---

## Viewing Video

After cameras are linked in the System Galaxy programming, the SG Operator to **call live video** from any linked door/input/elevator that is visible in the *Hardware Tree* or *Graphics Screen* by using the *Operator Command Menu*. SG Operators can also call video from *System Alarm Screen* or *Activity Events Report*.

SIDE NOTE: System Galaxy still supports the traditional DVR interface which does not use Web API Plugins. The dealer would simply install the DVR/NVR using the traditional method in the DVR Programming screen as described in the traditional [Galaxy DVR/NVR Integration Guide](#). New systems are recommended to use the new Web API Video solution.

# Part 1: Requirements & Setup

This topic covers the **Requirements** and **Setup** that must be done before you install any Video API Plugin.

## FEATURED TOPICS

- [Video Plugin Requirements](#)
  - [SG Setup Checklist](#) (*required for all VPI brands*)
- 

## Video Plugin Requirements

1. System Galaxy (SG) must be correctly installed and working before you install the Video Plug-In files.
  - To obtain the **Galaxy Installation media** with the Auxiliary folder intact see the [Download Software](#) page where you can either download the ISO files or order a USB Thumbdrive from Customer Service.



If GCS Services are running on a Server OS, you must install and operate Video Plugin files on a client workstation with Windows 10 to support monitoring and video viewing.



See the [Galaxy Installation Worksheet](#) for quick steps to install System Galaxy.



See the [SG Install Checklist](#) in this guide for steps to register and enable Video Viewing.

2. Your **Video Management System** (VMS/NVR unit) must be fully installed and working properly.
  - You need administrative rights on the VMS Unit to create a *user login* for the SG clients.
  - In some brands of VMS, the user login may need to have permissions to all the cameras.

## SG Setup Checklist (required)

This checklist validates the SG programming options are set correctly that relate to video support.

1. \_\_\_ Verify **System Registration** is correct: [Configure > Options > Registration > System](#)
  - Product level must be "Corporate" or "Enterprise" (per the purchase agreement).
  - '3rd Party DVRs' option must be enabled (checked) if your VMS is not an OEM Video Plugin.
  - 'Units' field must have the correct number of maximum units (per purchase agreement).
2. \_\_\_ Verify Client Web APIs enabled at each workstation that needs video support:  
[Configure > Options > Client Gateway ...](#)
  - 'Use Web Services' checkbox option must be "checked".
  - 'Web Service URL' must include the correct port number - 8000 (default) or 8443 (SSL Cert).
3. \_\_\_ Verify you can connect to the Web API Swagger page from the SG communication server and from each client workstation, using: <http://X.X.X.X:8000/swagger> or <https://X.X.X.X:8443/swagger>.
4. \_\_\_ Verify the following System Settings are correct at each/every client workstation that needs video support:  
[Configure > Options > System Settings ...](#)
  - **General tab:** 'DVR Enabled' option must be "checked" to support the Video Viewer.
  - **General tab:** 'Does Not Support Monitoring' option must be "unchecked" to support ability to manually launch the Video Viewing from an alarm event (in Alarm Event screen).
  - **Alarm Options tab:** 'Automatically Call-Up Video' option must be "checked" if you want the Video Viewer to automatically launch when an *alarm event* happens at door or input. (Note: that if multiple camera feeds are activated, the Viewer will display the video feed from the last event, or from the highest priority event if other alarm priority programming options are configured. Testing your set-up is highly recommended.)
5. \_\_\_ Verify that *SG Alarm screen* pops open when an alarm condition occurs at an armed device, and that the screen is displaying the alarm events for the hardware that you will be linking cameras to.



See the Galaxy **IT Network Checklist** for ports that must be available/unblocked.



See the Hardware Programming sections in [SG User Guide](#) for configuring readers and inputs for alarm events such as Door Forced Open or Armed Alarm.



6. \_\_\_\_ Restart System Galaxy if you changed any of the settings. This will ensure System Galaxy is initialized.



NEXT: See [PART-2 Installing Plugins](#) for information about installing the Video Plugin Files.

# Install Milestone XProtect Plugin

This topic covers installing a Video API Plugin for Milestone XProtect 64bit Video Management System (VMS). Instructions include installing the Middleware Service, the VMS unit login credentials, connecting to the VMS, and importing the camera names.

## FEATURED TOPICS

- [Install Milestone XP Plugin \(Server\)](#)
  - [Install Milestone XP Middleware \(Server\)](#)
  - [Install Video Plugin File \(Client\)](#)
  - [Connect to VMS and Import Cameras](#)
  - [Test VMS and Cameras](#)
- 

## Milestone XProtect Video Plugin (Server)

This step describes installing the **Video Plugin file** on the computer that hosts the Galaxy GCS Services.

## PREREQUISITES

- Verify GCS Web API Service is running:  
[Test URL > http://localhost:8000/swagger or https://X.X.X.X:8334/swagger \(SSL\)](#)
- The *MilestoneXprotect.exe* plugin install file is under the Auxiliary folder on the Galaxy Install media (USB/ISO).  
[Path > USB:\\Auxiliary\\System Galaxy\\Video Plugins\\MilestoneXprotect](#)

## STEPS

1. Copy the **MilestoneXP.exe** file into the *Milestone XP Folder* on the Galaxy Services Computer.

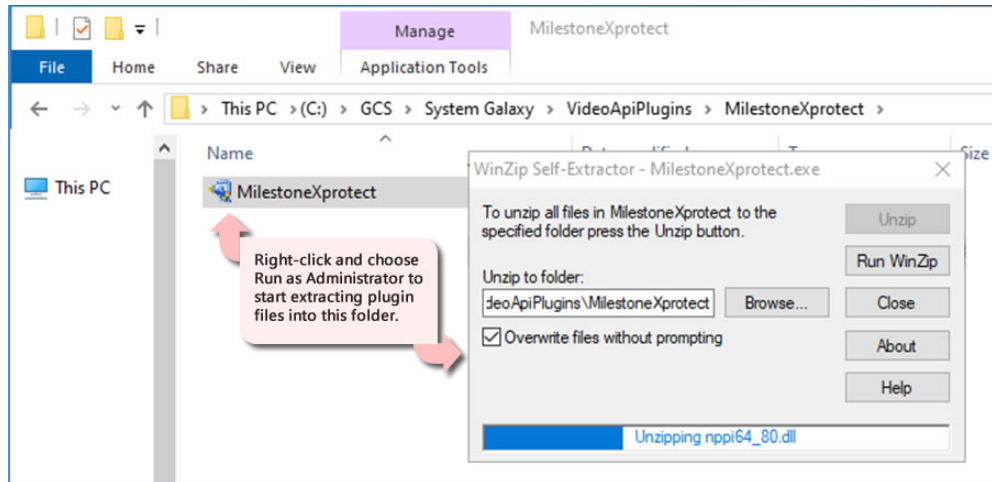
NOTE: you must create the Milestone XP folder if it does not exist.

Your PC > C: \\\GCS\System Galaxy\Video Plugins\MilestoneXprotect

2. Right-click on the **MilestoneXprotect.exe** file and choose 'Run as Administrator' from the menu.

The plug-in exe should self-extract.

### Extracting Video Plugin file



## Install Middleware Connector Service

This step covers installing the **Middleware Connector Service** on the computer that hosts the GCS Services.

## PREREQUISITES

- The *Middleware Connector Service* must be installed on the same computer that is hosting the GCS Services.
- Galaxy's *GCS Web API Service* must be running, or the Middleware Connector will not install.

## STEPS

1. Browse to the SG Milestone x64 MiddleWare Installer (.EXE file) on the computer running GCS services.

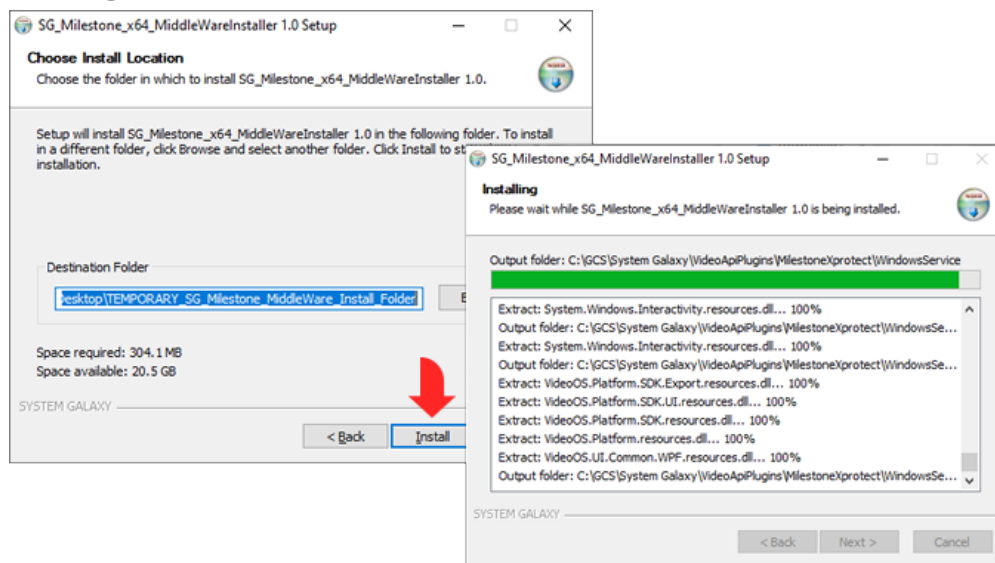
[C:\GCS\System Galaxy\Video Plugins\MilestoneXprotect\Installers\SG\\_Milestone\\_x64\\_MiddleWare\\_Installer.exe](#)

2. Right-click the Middleware Installer EXE file and choose to '*Run as Administrator*'.
3. The Installer program will open, click **NEXT** to begin.
4. You can accept default temp folder location (desktop).

NOTE: The installer will remove the temp folder after it finishes installing.

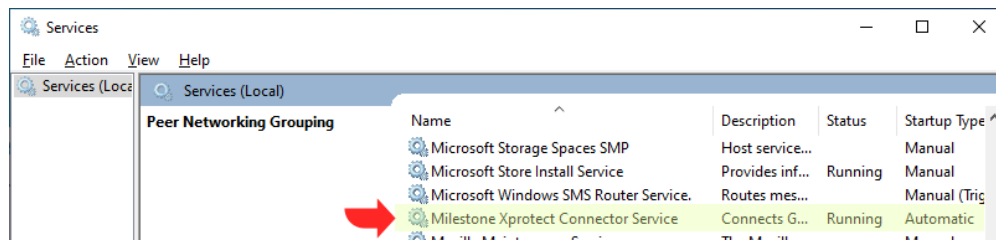
5. Click **Install** button (see figure below).

### Installing the Milestone Middleware



6. Click **FINISH** when you are done.
7. Open the *PC Services window*, verify the status of the '*Milestone Xprotect Connector Service*' is "Running" and is configured to "Automatic" startup.

Milestone service status is Running/Automatic



## Install Video Plugin (Client)

This step covers installing the video plugin file on a Galaxy client workstation.

*You can skip this step if you do not need Video at a client workstation.*

### PREREQUISITES

- The GCS Web API Service must be running.
- The GCS Services Computer must be online.
- The options that are related to Video Viewing and Monitoring must be enabled at this client. Refer to the [Setup Checklist](#) Item-4 in for details.

### STEPS

1. Copy the **MilestoneXP.exe** file into the *Milestone XP Folder* on the Galaxy Services Computer.

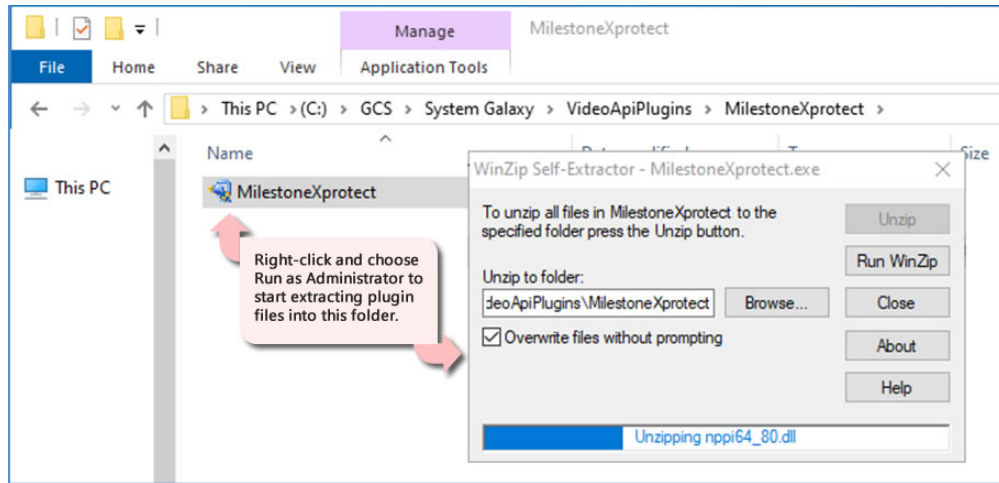
NOTE: you must create the Milestone XP folder if it does not exist.

Your PC > C: \\\GCS\System Galaxy\Video Plugins\MilestoneXprotect

2. Right-click on the **MilestoneXprotect .exe** file and choose 'Run as Administrator' from the menu.

The plug-in exe should self-extract.

Extracting Video Plugin file



## Connect to VMS & Import Cameras

This step describes adding a VMS Unit and client login to Galaxy, and importing the camera names.

### PREREQUISITES

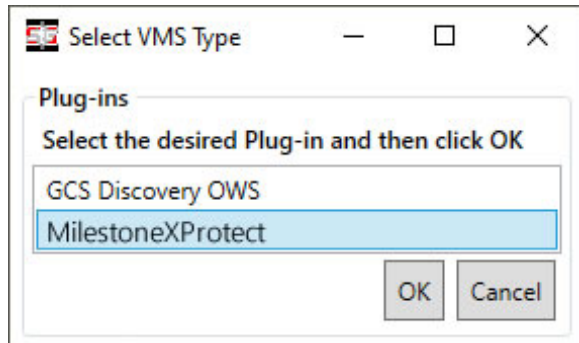
- The VMS Unit must already be installed, configured and online.
- The *VMS Client Login* for Galaxy must already be created at the VMS Unit and must have the correct permissions to view all cameras.
- All **camera names** must be configured at the **VMS unit** before you add the VMS to System Galaxy.
- The *GCS Web API Service* and the *MilestoneXprotect Connector Service* must be running.
- You must know the IP Address of the VMS Unit (or web address if hosted over the internet)
- You must know the VMS's client login credentials (Username/Password).

**IMPORTANT:** *Camera names* cannot be changed in System Galaxy. Camera names must be configured at the **VMS Unit** before they are imported into System Galaxy when the **VPI Programming** is done (this step). The imported names will display in screens and reports throughout System Galaxy, including the *SG Hardware Tree*, *Reader Programming Screen*, *Input Programming Screen*, and the *GCS VPI Video Viewer*. **TIP:** Create camera names that are useful - like *what area it shows* - e.g., lobby mezzanine, east parking lot, employee entrance, elevator lobby cam1.

## STEPS

❖ Open the Plugin Screen - [Configure](#) > [Hardware](#) > [DVR's](#) > [Video Plugins](#)

1. In the Plugins window, select “MilestoneXprotect” and click **OK** to open the *VMS Programming Screen*.



2. Enter a unique and meaningful Name (i.e. “MilestoneXP 01”).

FYI: This name is displayed throughout the screens and reports in System Galaxy - such as Hardware Tree, DVR Properties, Camera Programming, or Reader & Input screens, etc.

3. Enter *Client Login Credentials* (User or Domain & Password). Login rights must allow viewing/controlling cameras.
4. Enter the Web Services URL of the VMS unit (port number is not needed).
5. Click the **[TEST]** and **[SAVE CONNECTION]** buttons, which will test the connect and import the camera names.
6. Click **[SAVE SYSTEM DATA]** button, to save VMS connection settings and camera names into the SG database.

**IMPORTANT:** You must *restart System Galaxy software* after saving data to initialize the VPI system configuration.

VMS Programming & Camera Import - DEFAULT PORT = NONE

Ensure System Exists

Video System Information

VideoSystemUuid:  
00000000-0000-0000-0000-000000000000

Name:  
YOUR VMS 01

Connection Information

User / Email: YOUR LOGIN ID HERE Password: .....

Web Services Url: YOUR URL HERE Port: PORT # - IF REQUIRED

Test Connection Save Connection

Cameras

CameraGuid	Name	PtzSupported	Presets	PtzFlags	DvrGuid
17b1fa22-2bea-4422-9629-5b4867da8d84	Lobby Main Cam01	<input type="checkbox"/>			00000000-0000-0000-0000-000000000000 e62b4f
517c9668-9364-4271-a640-bdeb70adcd9e	Employee Entrance Cam02	<input checked="" type="checkbox"/>			00000000-0000-0000-0000-000000000000 e62b4f

Save System Data

The fields available may vary for your brand of Video Plugin.

## Test the VMS & Cameras

This step verifies that the VMS Unit and cameras were added correctly and that you can play video from chosen cameras.

### PREREQUISITE

- You must have completed the previous section by saving your System Data and restarting System Galaxy.

### STEPS

Launch System Galaxy and sign-in if you have not already done so. The *Hardware Tree* should be open.

**TIP:** You can refresh the *Hardware Tree* from the *View* menu.



1. Click the DVRs icon (+ ) to see the list of VMS Units.

RESULT > you should see the VMS Name that you created in the previous step.

2. Click on your VMS Name (+ ) to see the list of cameras imported.


NOTE: If you did not create custom camera names in the VMS Unit before you imported, then you will see the default camera names from the VMS – such as Camera 1, Camera 2, (...), a serial number, or whatever the default naming scheme of your VMS unit.



Do not change cameras in Galaxy after the import is done. Camera names in Galaxy must exactly match the camera names in the VMS Unit. You must create custom or specified camera names in the DVR/VMS Unit before you do the camera import step.

VMS Unit & Cameras listed in the SG Hardware Tree



3. Right-click a Camera icon  and select 'View Live Video' from the menu.

RESULT > the Video Viewer plays live video from the chosen camera. (Test every camera)

4. When you have tested all your cameras, you can link the cameras to the SG hardware ( readers & inputs ).



See [Part-3 Configure Cameras](#) to link cameras to readers or inputs.



See the *Hardware Programming* sections in [SG User Guide](#) for assigning cameras to readers and inputs as well as configuring them to respond to alarm conditions such as “Door Forced Open” or “Armed Alarm”.

## Part 3: Linking Cameras

This topic describes how to link a camera to Doors or Inputs in the System Galaxy programming screens.

### Features in this Topic

- [Linking Camera to Reader](#)
  - [Linking Camera to Input](#)
-

# Link Camera to a Reader

This section describes how to link a camera to a Door/Reader.

## PREREQUISITES

- The GCS Web API Service must be running.
- The VMS Unit and Cameras must already be installed /imported into System Galaxy (including camera names).
- Video Viewing: *DVR Enabled* checkbox must be “checked” ([System Settings > General](#)).
- Video Viewing: *Does Not Support Monitoring* checkbox must be “unchecked” ([System Settings > General](#)).
- Auto-Call Video: *Auto-Callup Video on Alarm* checkbox must be “checked” ([System Settings > Alarm Options](#)).

### ❖ Open Reader screen - [Configure > Hardware > Doors](#)

1. Click the **EDIT** button and select the 'DVR Camera Settings' tab.
2. Select the **VMS Unit** name (droplist).
3. Select the desired **Camera name** (droplist).

NOTICE: If you want to *automatically call-up video* on door alarm events, you must configure the Door/Reader hardware to respond to alarms by setting hardware to be acknowledged by the operator.



See *Reader Programming* in the Hardware Programming Chapter of the [SG User Guide](#) for information about configuring the system to generate alarm events for alarm conditions such as “Door Forced Open” or “Door Open Too Long”, etc.

5. Click **APPLY** to save the settings when finished.

### Camera Settings (Reader/Door Property screen)

The screenshot shows the 'Camera Settings (Reader/Door Property screen)' with the 'DVR Camera Settings' tab selected. The 'Loop' field is set to '635 Test'. The 'Reader Name' is 'Lobby Entrance' and the 'Reader Type' is 'HID ProxPro'. The 'Control Unit' is 'All Controllers'. The 'Notes' field is empty. The 'Apply' button is highlighted with a yellow arrow. The 'Select DVR' dropdown is set to '\*\*Your VMS Unit Name\*\*' and the 'Select Camera' dropdown is set to 'Customer 1000 - Camera 1'. The 'DVR Camera Settings' tab is highlighted with a yellow box.



## Linking a Camera to an Input

This section describes how to link a camera to an Input device such as a motion detector.

### PREREQUISITES

- The GCS Web API Service must be running.
- The VMS Unit and Cameras must already be installed /imported into System Galaxy (including camera names).
- Video Viewing: *DVR Enabled* checkbox must be “checked” ([System Settings > General](#)).
- Video Viewing: *Does Not Support Monitoring* checkbox must be “unchecked” ([System Settings > General](#)).
- Auto-Call Video: *Auto-Callup Video on Alarm* checkbox must be “checked” ([System Settings > Alarm Options](#)).

#### ❖ Open Input screen - [Configure > Hardware > Inputs](#)

1. Click the **EDIT** button and select the 'DVR Camera Settings' tab.
2. Select the **VMS Unit name** (droplist).
3. Select the desired **Camera name** (droplist).

NOTICE: If you want to *automatically call-up video* on door alarm events, you must configure the Door/Reader hardware to respond to alarms by setting hardware to be acknowledged by the operator.



See *Input Programming* in the Hardware Programming Chapter of the [SG User Guide](#) for information about configuring the system to generate alarm events for armed inputs.

5. Click **APPLY** to save the settings when you are finished.

Camera Settings (Input Property screen)

Port Type: Digital I/O Board (8 Inputs, 4 Outputs)  
Clust: 002, Cont: 001, B: 5, S: 2, I: 01

Input Name: DIO Input 1 (Snibby Button)

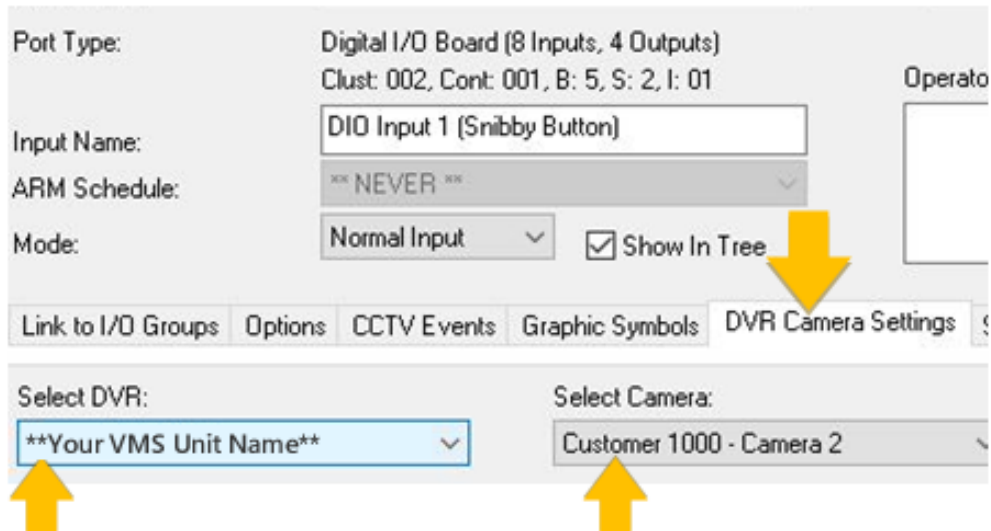
ARM Schedule: NEVER

Mode: Normal Input ☒ Show In Tree

Link to I/O Groups Options CCTV Events Graphic Symbols DVR Camera Settings

Select DVR: \*\*Your VMS Unit Name\*\*

Select Camera: Customer 1000 - Camera 2



## Part 4: View Video

This topic covers the general operation of the Video Viewer in live and recorded modes.

### Features in this Topic

- [About Playback Controls](#)
  - [Operate Viewer in Live Mode](#)
  - [Operate Viewer In Recorded Mode](#)
- 

### Playback Controls

The availability of *playback controls* and *viewing modes* may vary based on the type of camera connected or the permissions configured at the VMS Unit.

- If a camera does not support a particular feature (e.g. ptz), then it will not be available in the Video Viewer.
- The client login account at the VMS Unit must have the proper permissions to operate cameras and see video.
- See the Manufacturer's Documentation for instructions on programming the VMS Unit.

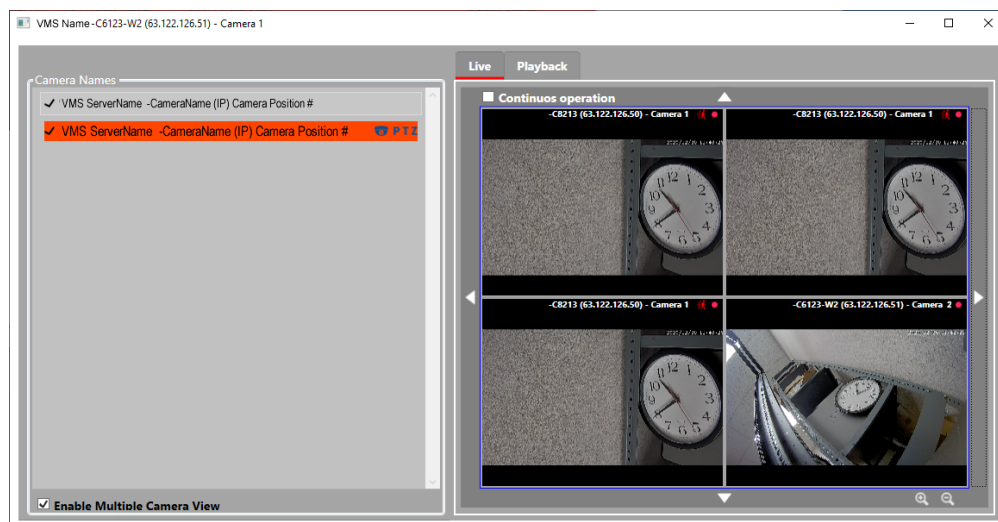


# Operate Viewer in Live Mode

## LIVE MODE = Select Live tab

1. **Live Video Frame** displays when operator chooses View Video from an alarm event or hardware icon.
2. **Double-click a camera** to start playing live video from the camera; (a checkmark appears beside camera).
3. **Grid View checkbox** - toggles the video frame between *normal view* and *grid view*.
  - **CHECKED** = Changes the *video frame* to a 2x2 grid and enables viewing of multiple cameras (up to 4 cameras at once). Double-clicking a camera starts its video in the next frame.
  - **UNCHECK** = Returns *video frame* to single camera view. Streams live video of selected camera.
4. **PTZ Controls** - drive the PTZ camera in a desired direction (pan/tilt = ◀ ▶ ▲ ▼ ) (zoom = +/-)
5. **Continuous Operation checkbox** – toggles the PTZ Mode between *continuous sweep* and *incremental steps*.
  - **CHECKED = Continuous Sweep**. PTZ Camera will sweep in the direction you drive it. (click ◀ ▶ ▲ ▼ )Camera pans to the end of its range with one click.
  - **UNCHECK = Incremental Steps**. PTZ Camera moves small steps in the direction you drive it. (click ◀ ▶ ▲ ▼ ) Camera pans step-by-step with each click.

## Video Viewer – Live Mode



## Operate Viewer in Recorded Mode

### RECORDED MODE = Select Playback tab

1. **Playback Video Frame** displays when operator chooses View Video from a historical event in DVR View screen. The DVR View screen opens from the Activity History Report window if 'DVR View' is checked when you generate report.
2. **Double-click a camera** to choose it (a checkmark should appear beside the camera). You need to enter a date/time to start playing video from that point.
3. **Date/Time field** Choose a date and time to start the video. This will be the start time of the video you play back.
4. **Playback Controls** – lets operator control direction and speed of the video.
  - **Play** = starts playing video at the indicated speed.
  - **Pause** = stops/freezes video playback
  - **Skip Forward/Reverse** = skips forward/reverse in the direction you choose and plays video from that point.
  - **Speed** = sets the playback speed at 1, 2, 3, to 4 times normal rate of playback. "1" is the normal playback speed.
5. **Playback Timer** – show/hide playback clock. This clock starts from date/time selected (helpful if VMS or camera clock times are not synced or not displayed (configurable at the VMS unit)).
  - **CHECKED** = shows the playback clock timer.
  - **UNCHECKED** = hides the playback clock timer.

### Video Viewer – Recorded Mode

