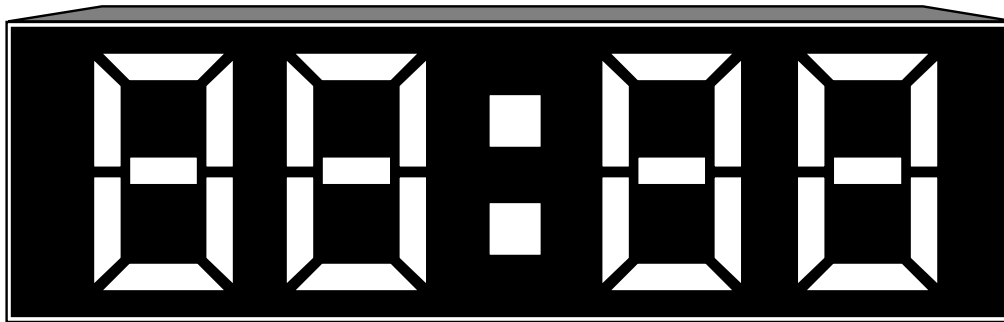


INDUSTRY LEADERS DEPEND ON US ...FOR SOLUTIONS

Cypress Computer Systems, Inc. • 1778 Imlay City Rd. • Lapeer, MI 48446-3206
TX(810)245-2300 • FX(810)245-2332 • www.cypresscom.com

Digital Clock with 4" Numerals



CCK-1204

- Adds time of day displays to Access Control and Time & Attendance Systems
- Readable from 100 feet
- Indoor or Outdoor Use
- Standard or Military Time Formats

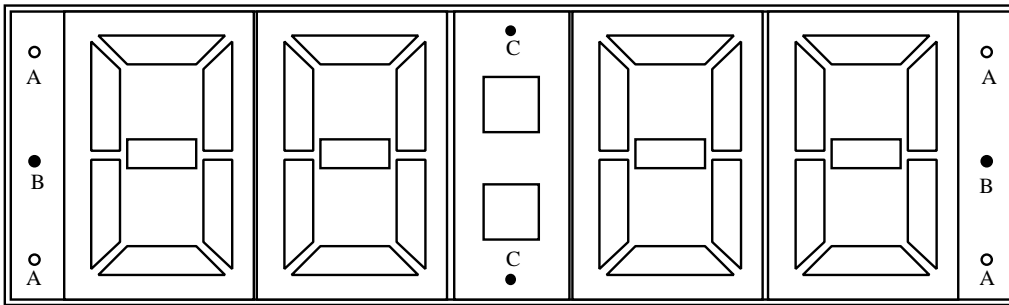
The CCK-1204 is ideal for time and attendance applications where the Access Control System's time must be displayed. The large 4" numerals can be read from up to 100 feet away in normal indoor or outdoor lighting conditions. Up to 32 clocks can be driven from one time source over a single twisted pair network. The CCK-1204 interfaces to most manufacturers' access control equipment. Each clock requires 12 volts DC($\pm 15\%$) at 1/4 amp.($\pm 20\%$). The weather resistant enclosure measures (w)17" x (h)5" x (d)3"

Ordering Information

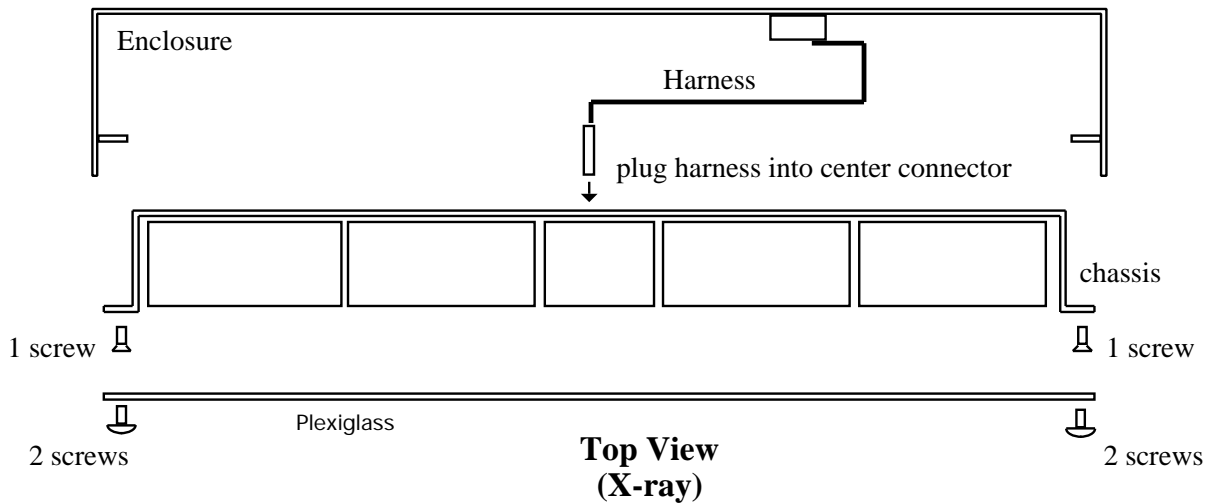
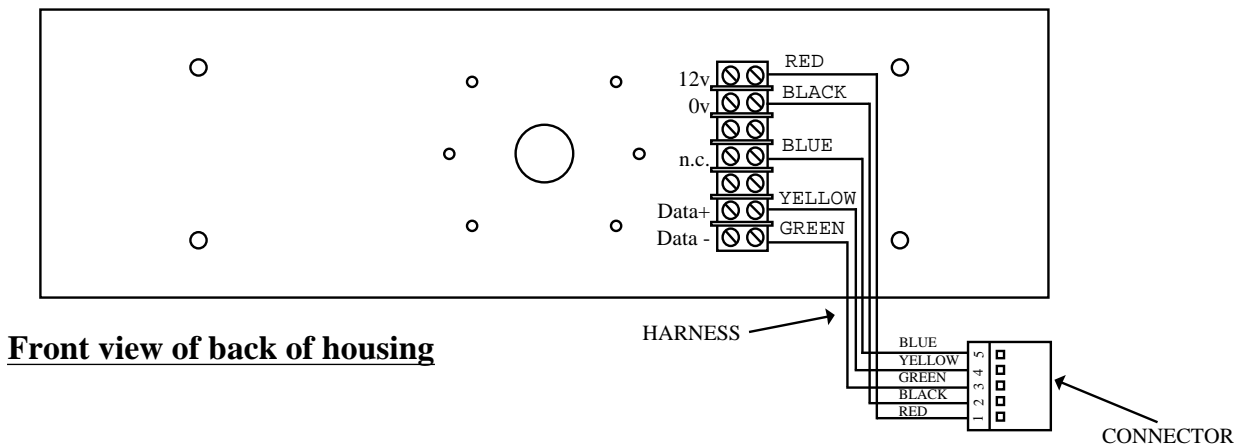
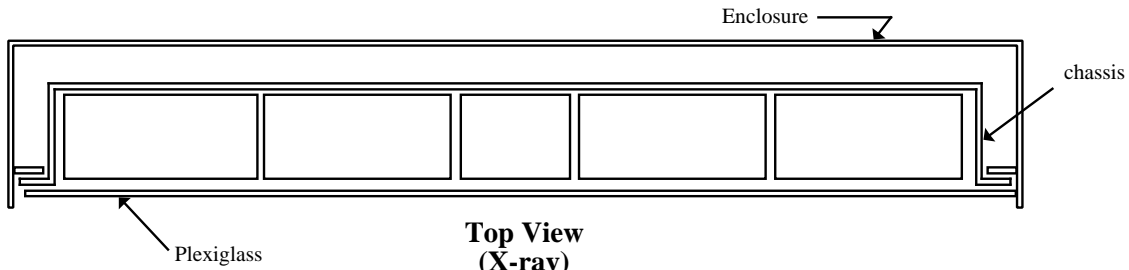
CCK-1204.....4" Time Display
CVT-1230.....Standard RS-232 Interface Driver

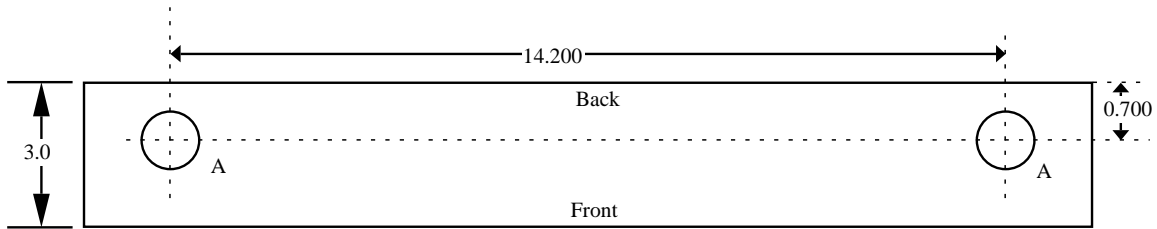
Other CVTs are available for specific manufacturer's equipment.

Front View

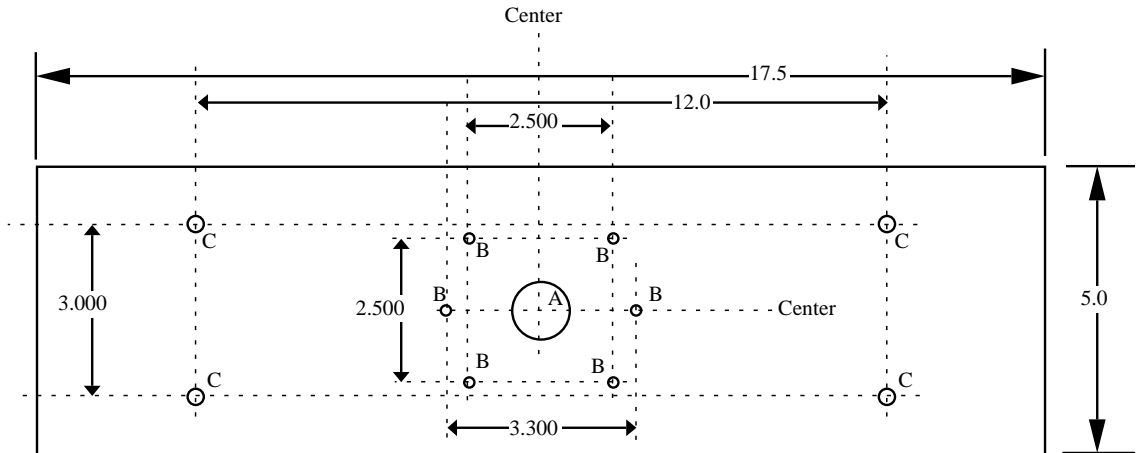


- remove 4 screws (A) to remove plexiglass cover
- remove 2 screws (B) to remove chassis when mounting the enclosure and wiring
- remove 2 screws (C) to gain access to the option switch





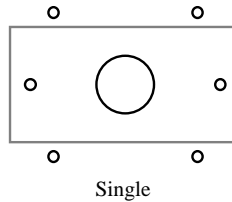
Bottom View



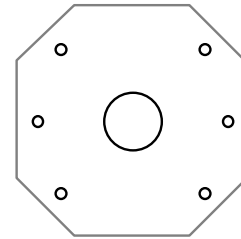
Front view of back of housing

A = .875 Knockout (3)
 B = 0.187 (6)
 C = 0.290 (4)

Hole pattern around knockout is for a single or octagon outlet box.

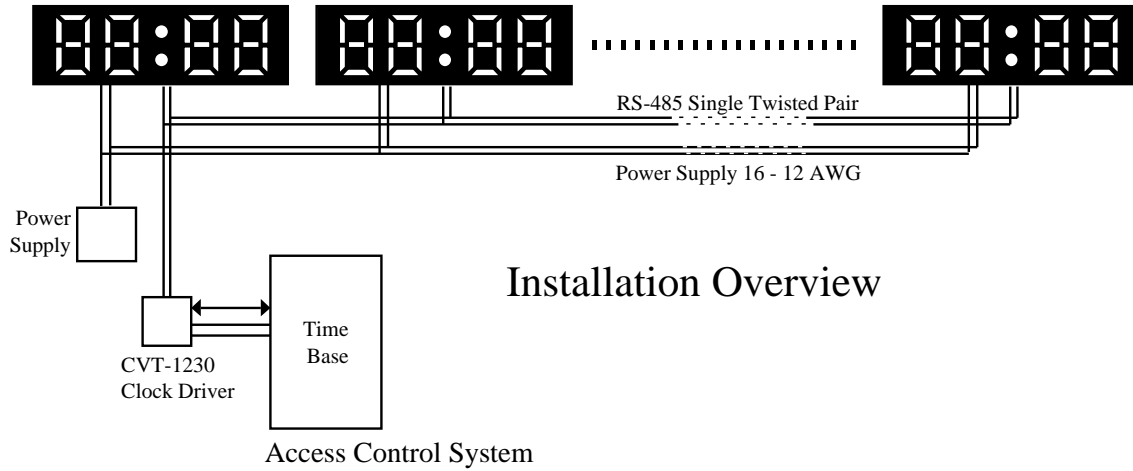


Single

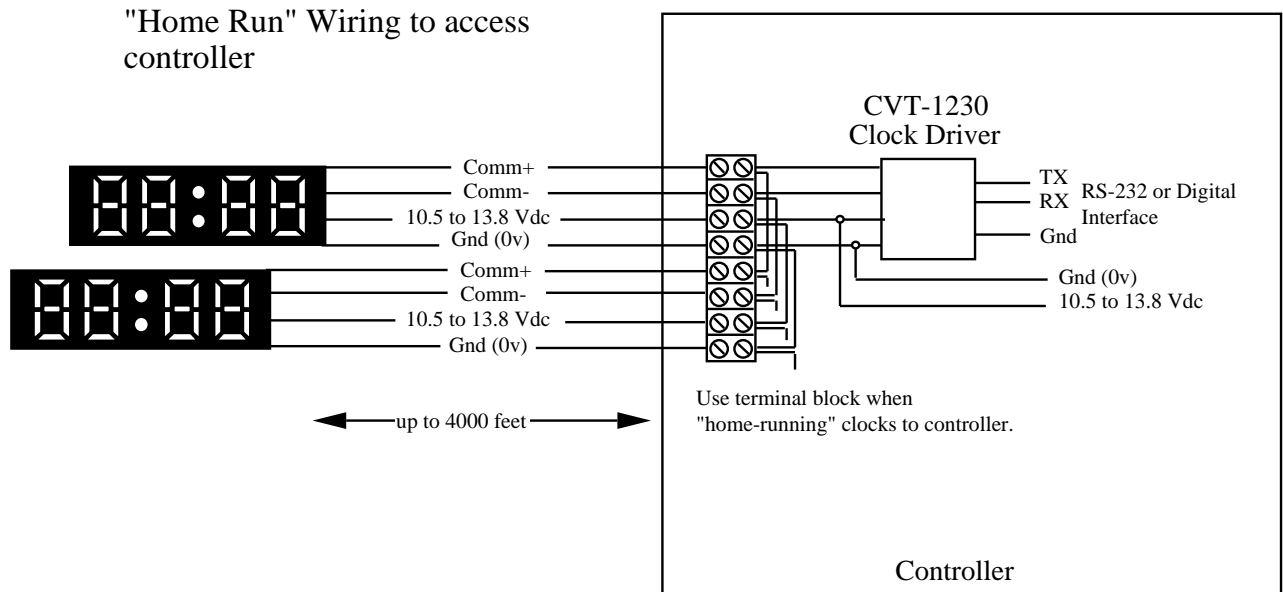


Std. Octagon

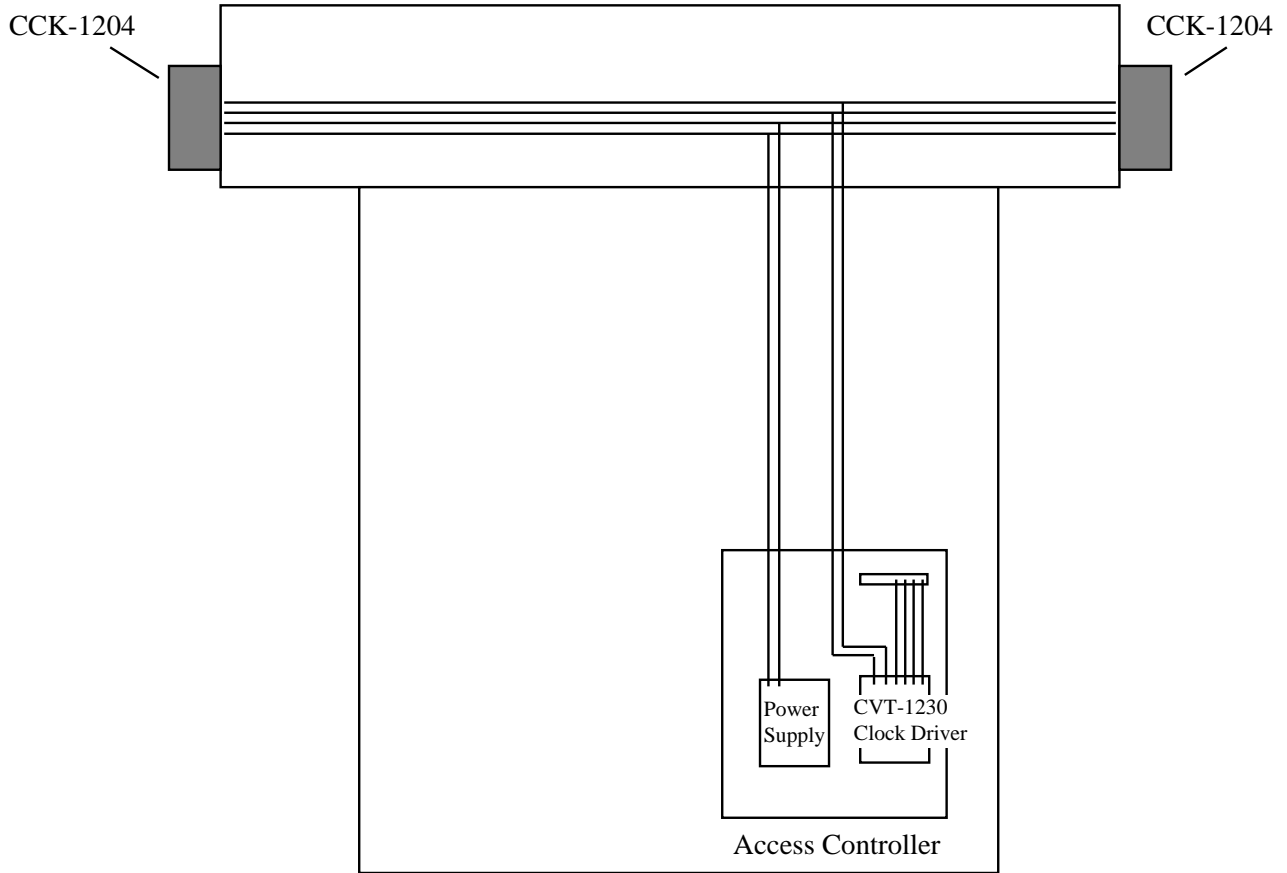
Power: 12 Vdc ($\pm 15\%$) @ 300ma. (max)
 Operating Temp.: -40°C to $+85^{\circ}\text{C}$ / -40°F to 185°F
 Communication: RS-485 2-wire network
 Requires RS-232 ASYNC or Digital Interface to receive information from master time source.



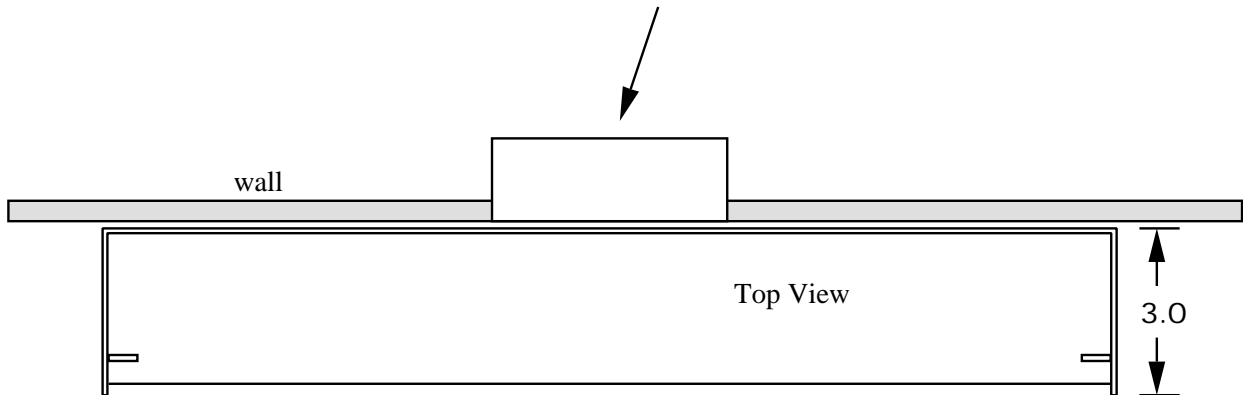
- A single CVT-1230 can drive up to 32 Displays.
- Each CCK-1204 Display requires 12 Vdc @ 300 ma.



Turnstile Mounting



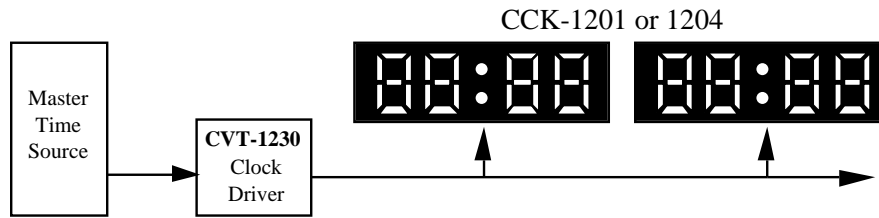
Mount enclosure to wall with electrical box (single gang or octagon).



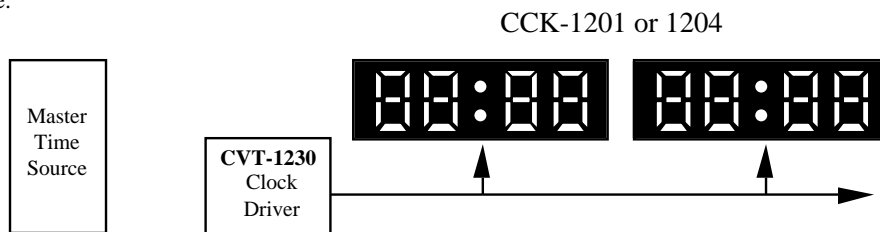
Wall Mounting

CCK-1204 Time Displays: Functional Description

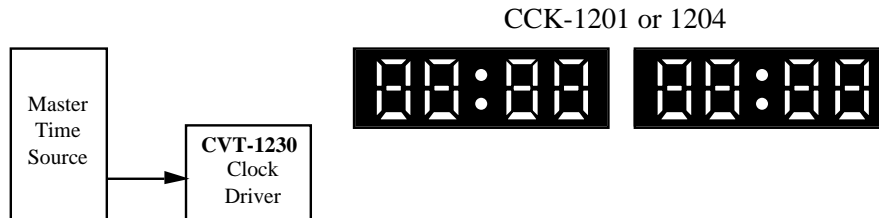
The clocks are used to display the time from a Master Time Source. When the Master Time Source sends a time stamp to the Clock Driver, the Clock Driver's internal time base is updated but the Master Time Source's time stamp is sent to the clocks. In other words, the Clock Driver's internal time base is updated but not used unless there is no master time stamp. Similarly, the clocks' internal time base is updated by time stamps from the Clock Driver but the actual Clock Driver time stamp is displayed. The Clock's internal time base is updated but not used unless there is a loss of Clock Driver information.



If there is a communication loss between the Master Time Source and the Clock Driver, the Clock Driver uses its internal time base to update the clocks. A loss of communication is defined as 1 minute and 10 seconds without receiving a valid time stamp from the Master Time Source.



If the clocks lose contact with the Clock Driver, they use their internal time base to update the display. A loss of communication is defined as 5 seconds without receiving a valid time stamp.



Operation

CCK-1204 (4" Electromechanical Time Display)

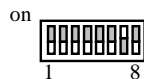
In normal operation, a red LED will glow steadily just above the colon ":". This indicates that the clock is communicating with its Clock Driver. If the LED blinks (1 flash per second), this indicates a communication failure. If the LED is off, this indicates a loss of power or malfunction, since the digits remain in their current state without power.

Options

CCK-1204 (4" Electromechanical Time Display)

The CCK-1204 can be configured to display standard (12 hour) or military (24 hour) time formats. When a loss of communication occurs, the CCK-1204 can be configured to continue to display it's internal time base or blank the display.

SWITCH 6ON = 12 hour mode **OFF** = 24 hour mode
SWITCH 5ON = Blank Display **OFF** = Use Internal Time
SWITCH 4ON = Test Mode **OFF** = normal



DIP Switch

• 7 must be "on" and 8 must be "off" for normal operation.

190511